

**N** DIN 32876  
Part 1

**\*** Nickel-plated housing. Stainless steel measuring bolt, hardened. Sealing bellows: Nitrile = resistant elastomer. Viton = highly resistant fluoroelastomer.

**A** Fixing shank Ø 8 mm. Ball-bearing measuring bolt. Both lower and upper stops are fixed. Interchangeable insert. M2,5 thread. Carbide ball tip Ø 3 mm. 2 m long cable. 5-pin DIN 45322 connector.

**\*** Supply frequency: 13 kHz (± 5 %) Max. mechanical frequency\*\* 60 Hz.

**\*** 0,1 µm/°C

**\*** 20 ± 0,5°C

**\*** Level of protection: IP65 (IEC 60529)

**\*** Mobile weight: 2 g

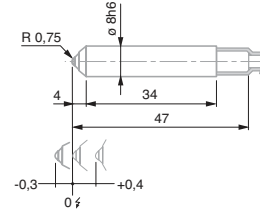
**\*** Inspection report with a declaration of conformity

## GT 41 / GT 42 Miniature Probes, ± 0,3 mm, 0,7 mm Bolt Travel

Compact probes for use in small spaces – Designed to be mounted on a measuring head for the inspection of bores and similar features.



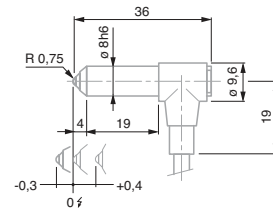
GT 41



GT 41



GT 42



GT 42

<b>No</b>	<b>=</b>	<b>    </b>	<b>Hand</b>	<b>*</b>	<b>*</b>
		Measuring range, mm	Nominal measuring force*, N	Bolt retraction	Sealing bellows
03230001	GT 41	± 0,3	0,63	None	Nitrile
03230002	GT 42	± 0,3	0,63	Vacuum	Nitrile

<b>=</b>	<b>    </b>	<b>0 ±</b>	<b>↕</b>	<b>↕</b>	<b>A</b>	<b>*</b>	<b>⚠</b>
Measuring bolt travel, mm	Max. permissible error for deviations in linearity, µm (L en mm)	Repeatability, µm	Hysteresis, µm	Setting of lower stop of measuring bolt***, mm	Cable output	Data sheet No.	
GT 41	0,7	0,2 + 5 · L <sup>2</sup>	0,01	0,01	Fixed stops: lower -0,3 upper +0,4	Axial	03200258
GT 42	0,7	0,2 + 5 · L <sup>2</sup>	0,01	0,01	Fixed stops: lower -0,3 upper +0,4	Radial	03200259

\* Electrical zero (N) ± 25 % deviation limit. Valid in vertical mounting position, measuring bolt lowered and in static measuring.

\*\* For an amplitude of 10 % to the last value of the measuring range.

\*\*\* Distance from electrical zero.

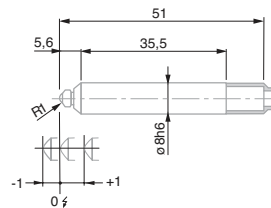


## GT 43 / GT 44 Miniature Probes ± 1,0 mm, 2,1 mm Bolt Travel

Compact probes for use in small spaces – Designed to be mounted on a measuring head for the inspection of bores and similar features.



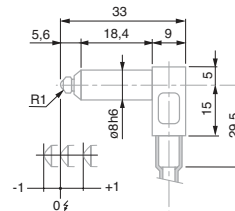
GT 43



GT 43



GT 44



GT 44

- DIN 32876 Part 1
- Nickel-plated housing. Stainless steel measuring bolt, hardened. Sealing bellows: Nitrile = resistant elastomer. Viton = highly resistant fluoroelastomer.
- Fixing shank Ø 8 mm. Ball-bearing measuring bolt. Both lower and upper stops are fixed. Interchangeable insert. M2 thread. Carbide ball tip Ø 3 mm. 2 m long cable. 5-pin DIN 45322 connector.
- Supply frequency: 13 kHz (± 5 %) Max. mechanical frequency\*\*: 60 Hz.
- 0,1 µm/°C
- 20 ± 0,5°C
- Level of protection: IP65 (IEC 60529)
- Mobile weight: 2 g
- Inspection report with a declaration of conformity

		Measuring range, mm	Nominal measuring force*, N	Bolt retraction	Sealing bellows
03230035	GT 43	± 1	0,4	Mechanical	Viton
03230017	GT44	± 1	0,4	Vacuum	Viton

Measuring bolt travel, mm	Max. permissible error for deviations in linearity, µm (L en mm)	Repeatability, µm	Hysteresis, µm	Setting of lower stop of bolt***, mm	Cable output	Data sheet No.	
GT 43	2,1	0,2 + 5 · L <sup>2</sup>	0,1	0,15	Fixed stops: lower -1,05 upper +1,05	Axial	03200260
GT44	2,1	0,2 + 5 · L <sup>2</sup>	0,1	0,15	Fixed stops: lower -1,05 upper +1,05	Radial	03200261

\* Electrical zero (N) ± 25 % deviation limit. Valid in vertical mounting position, measuring bolt lowered and in static measuring.

\*\* For an amplitude of 10 % to the last value of the measuring range.

\*\*\* Distance from electrical zero.

